

COVID-19 In-Person Worship Journey

Objective: To create an environment that mitigates risks and eases concerns with in-person worship services during the global COVID-19 pandemic. The plan will:

- Promote health and wellness of visitors
- Ensure building is safe, resilient and ready
- Integrate government requirements or guidelines for social distancing

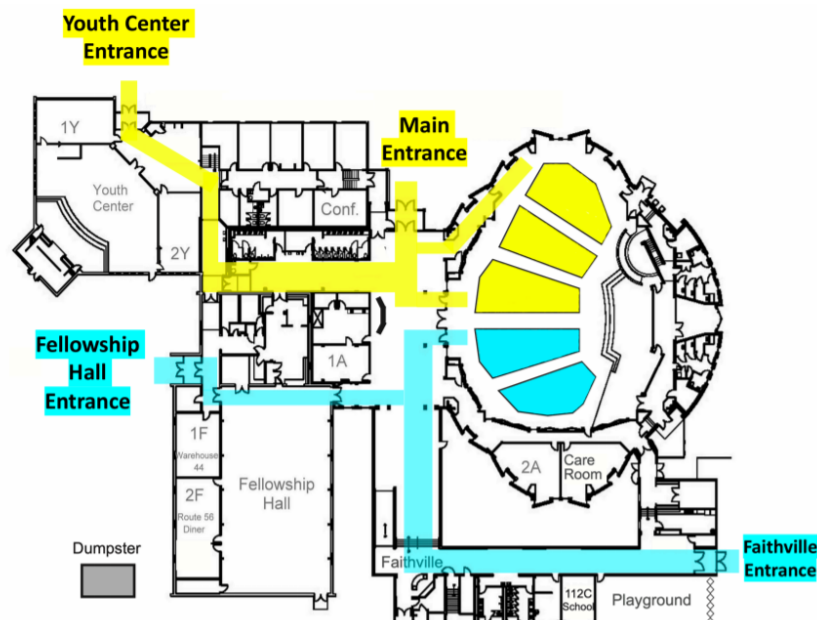
The following safeguards will remain in effect until further notice. Church leadership is monitoring the situation and following state government recommendations. If you or any member of your household are symptomatic or have tested positive for COVID-19, please participate on-line. You may also choose to participate on-line if you are high risk or have an underlying health condition.

What to expect

- **Upon arrival**, please exercise social distancing protocol while proceeding to one (1) of the four (4) available entrances (see map) where greeters will be wearing personal protection equipment and ready to open and hold doors for you. If you would like a pair of gloves, they will be available at all four (4) entrances for your convenience. Hand sanitizer stations will also be placed at all four (4) entrances. If you attend the 10:30 am service, please arrive no earlier than 10:15 am.
- After entering the building, please **follow the path** to the auditorium and find a seat on the appropriate side of the room. If you entered through the Main or Youth Center entrance, we ask that you sit on the left. If you entered through the Faithville or Fellowship Hall entrance, please sit on the right.

COVID-19 In-Person Service Map

- Enter 1 of the 4 highlighted entrances
- **Yellow Path:** Main and Youth Center entrances proceed to the left side of the auditorium
- **Blue Path:** Faithville and Fellowship Hall entrances proceed to the right side of the auditorium
- Exit following the same path as you entered on



- **Social distance safeguards** will be followed in the auditorium to aid in your innocuous worship experience. Ushers will help by guiding you in one (1) direction to find an acceptable seat. Every other row will be marked as unavailable, and we ask that you leave two (2) empty seats in between your party and the party next to you. If you are in a row with pews, please leave six (6) feet of spacing.
- **Communion and offering** will both be touchless processes. Communion cups with bread will be in a welcome kit available for pick up upon entering the building. Offering bins will be located in key areas allowing you to easily make a donation.
- At the **conclusion of the service**, ushers will return to help you exit the auditorium and building in a safe manner. Please follow the same path as you entered on and leave six (6) feet in between you and any adjacent groups. If you used gloves while in the building, garbage receptacles will be placed at every exit for easy disposal. If you attend the 9:00 am service, please exit promptly to allow for adequate cleaning time before guests arrive for the 10:30 am service.

Additional Important Information

- We recommend that each person brings and wears a **mask while entering and exiting** the building. It is your choice if you wear a mask during worship. Please do what makes you the most comfortable and know that your neighbor will do the same.
- The building has been fully **cleaned and sanitized**, and high touch areas will be re-sanitized in between services. Bibles, cards and pencils have been removed from the back of seats. If you are in need of a Bible, please let an usher know and they will be happy to get one for you.
- **Children's Programming** will remain suspended until further notice. Church leadership will monitor state guidance, and resume programming when safe.
- Avoid congregating in **common space or lobby areas**. Refreshments and coffee will not be available.

Indiana Guidelines for In-Person Worship Services

- Ensure 6 feet between individuals or family units of the same household
- Space and mark seating, alternate rows
- Clean between each service
- Provide hand sanitizer at high-contact locations
- Recommend putting on a face covering before entering the building
- Avoid handing out materials
- Individuals who have an underlying at-risk health condition should watch services online
- Keep cafés, coffee, and other self-service stations closed
- Establish safe protocols for any communion and collection to avoid contact
- Dismiss services in a way that supports social distancing